



Visions Unlimited Academy

1275 East Barney Lane, Benson, AZ 85602 586-8691
visionsunlimited@vtc.net

2010-2011 School Calendar

August 2010						
S	M	T	W	T	F	S
1	2	3	4	5	6	7
8	9	10	11	12	13	14
15	16	17	18	19	20	21
22	23	24	25	26	27	28
29	30	31				

September 2010						
S	M	T	W	T	F	S
			1	2	3	4
5	6	7	8	9	10	11
12	13	14	15	16	17	18
19	20	21	22	23	24	25
26	27	28	29	30		

October 2010						
S	M	T	W	T	F	S
					1	2
3	4	5	6	7	8	9
10	11	12	13	14	15	16
17	18	19	20	21	22	23
24	25	26	27	28	29	30
31						

November 2010						
S	M	T	W	T	F	S
	1	2	3	4	5	6
7	8	9	10	11	12	13
14	15	16	17	18	19	20
21	22	23	24	25	26	27
28	29	30				

December 2010						
S	M	T	W	T	F	S
			1	2	3	4
5	6	7	8	9	10	11
12	13	14	15	16	17	18
19	20	21	22	23	24	25
26	27	28	29	30	31	

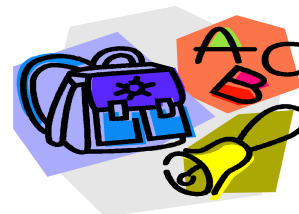
January 2011						
S	M	T	W	T	F	S
						1
2	3	4	5	6	7	8
9	10	11	12	13	14	15
16	17	18	19	20	21	22
23	24	25	26	27	28	29
30	31					

February 2011						
S	M	T	W	T	F	S
		1	2	3	4	5
6	7	8	9	10	11	12
13	14	15	16	17	18	19
20	21	22	23	24	25	26
27	28					

March 2011						
S	M	T	W	T	F	S
		1	2	3	4	5
6	7	8	9	10	11	12
13	14	15	16	17	18	19
20	21	22	23	24	25	26
27	28	29	30	31		

April 2011						
S	M	T	W	T	F	S
					1	2
3	4	5	6	7	8	9
10	11	12	13	14	15	16
17	18	19	20	21	22	23
24	25	26	27	28	29	30

May 2011						
S	M	T	W	T	F	S
1	2	3	4	5	6	7
8	9	10	11	12	13	14
15	16	17	18	19	20	21
22	23	24	25	26	27	28
29	30	31				



Important Dates	
1st Day for Teachers	August 5
1st Day for Students: full day	August 9
Half days begin	August 11
Labor Day	September 6
Teacher Workday	October 18
Parent Conferences: 1/2 days	October 20-21
Veterans Day	November 11
Thanksgiving Break	November 25-26
Christmas Break	Dec 20- Dec 31
Martin Luther King Day	January 17
Presidents Day	February 21
Spring Break	March 14—18
Parent Conferences: 1/2 days	March 23-24
Good Friday	April 22
Last Day for Students: 1/2 day	May 18 "HALF DAY"
Teacher Workday	May 19-20

Legend	
	First and Last Days for Students
	Teacher Workday (No School)
	Student and Teacher Holidays
	Early Dismissal / Parent Conferences
	Early Dismissal / Teacher Workshop

Grading Periods		
Quarter	Dates	Teaching Days
1st	Aug 9 — Oct 11	45
2nd	Oct 12 — Dec 17	45
3rd	Jan 3 — Mar 8	45
4th	Mar 9 — May 18	45
Total		180

